

Telugu Indic Input 2 - User Guide

Contents

WHAT IS TELUGU INDIC INPUT 2?	3
SYSTEM REQUIREMENTS.....	3
TO INSTALL TELUGU INDIC INPUT 2	3
<i>To Use Telugu Indic Input 2</i>	4
SUPPORTED KEYBOARDS	5
TELUGU TRANSLITERATION.....	5
TELUGU INSCRIPT	7
TOOL SETTING OPTIONS	8
ON-THE-FLY HELP.....	8
SHOW KEYBOARD	8
SWITCH TO ENGLISH/TELUGU	9
HELP	9
TROUBLESHOOTING	10
TO UNINSTALL TELUGU INDIC INPUT 2	11

What is Telugu Indic Input 2?

Telugu Indic Input 2 provides a very convenient way of entering text in Telugu Language using the English QWERTY keyboard in any editing application (Office Application/WordPad /Notepad) that supports Text Services. Telugu Indic Input 2 tool will be packaged as a setup and running the setup will invoke the services. The tool supports all popular keyboard layouts.

System Requirements

Windows Vista

Windows 7

*Tool is compatible with equivalent 64-bit Operating Systems mentioned above.

To Install Telugu Indic Input 2

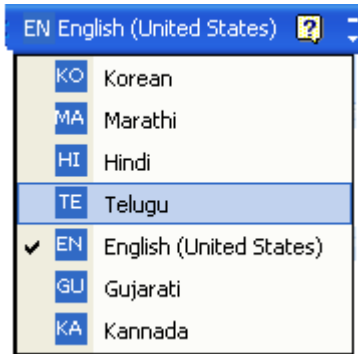
Installation of the Telugu Indic Input 2 is a very easy process that takes less than two minute to complete.

Run or double click **Telugu Indic Input 2 Setup**. The setup wizard will guide you through the installation process. Once the installation process is complete, **Telugu Indic Input 2 has been successfully installed** will be displayed.

Note: On Windows Vista and Windows 7, if your user login does not have administrative privileges or is not included in the user group of administrators right click the "Setup.exe" icon and select "Run as Administrator".

To Use Telugu Indic Input 2

1. Start any Office application, including WordPad or Notepad.
2. Click the Language Indicator located in the System Tray on the right side of the Windows taskbar or on Language bar as shown below and select **TE-Telugu**.



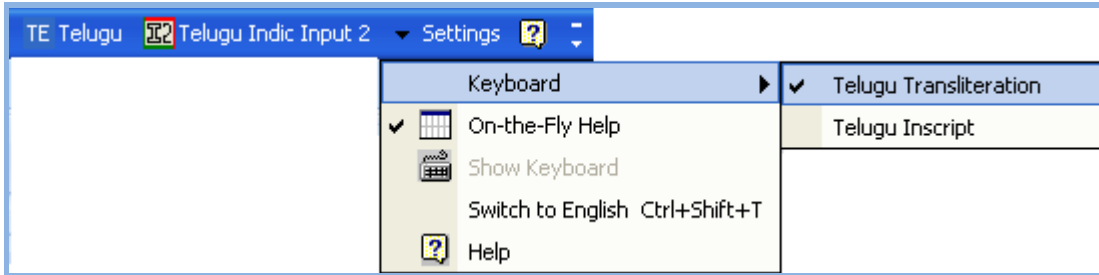
3. Select **Telugu Indic Input 2** from the shortcut menu that appears. The PC is now ready to start typing in Telugu.



Note: If you are unable to view Language bar on your PC [Click Here](#).

Supported Keyboards

Telugu Indic Input 2 supports various types of Keyboards. Click **Settings** Icon and select **Keyboard**. Choose keyboard layout of your choice form list of available keyboards.



Telugu Transliteration

User can type his message in Roman using the Standard English keyboard, which is transliterated on-the-fly to Telugu. It works on the logic of phonetics and is most effective when user write the word the way it is spoken.

Vyanjan (Consonants)									
క	ka,ca,qa	ఖ	kha	గ	ga	ఘ	gha	ఙ	Nga
చ	cha	ఛ	chha	జ	ja,za	ఝ	jha	ఞ	Nja
ట	Ta	ఠ	Tha	డ	Da	ఢ	Dha	ణ	Na
త	ta	థ	tha	ద	da	ధ	dha	న	na
ప	pa	ఫ	pha,fa	బ	ba	భ	bha	మ	ma
య	ya	ర	ra	ళ	Ra	ల	la	ళ	La
వ	va,wa	శ	sha	ష	Sha	స	sa	హ	ha
								క్ష	kSha,X

Swar (Vowels)									
అ	a	ఆ	aa	ఇ	i	ఈ	ee,ii,l	ఉ	u
ఊ	oo,uu,U	ఋ	RR,RRu	ఎ	e	ఏ	E	ఐ	ai,ei
ఒ	o	ఌ	O	ఔ	au,ou				

Examples	
Input	Output
aTaka	అటక
eega	ఈగ

Matras

ా	aa	ి	i	ీ	ee,ii,l	ు	u	ూ	oo,uu,U	ృ	Ru
ా	RU	ే	E	ై	e	ై	ai,ei	ో	o	ౌ	ou,au
ో	O										

Examples

Input	Output
kaaki	కాకి
chiiluka	చిలుక

Anuswara, Visarga and Chandrabindi

ం	m,^	ః	H	ఁ	M
---	-----	---	---	---	---

Examples

Input	Output
mamtramu	మంత్రము
amthaHpuram	అంతఃపురం
rEMdu	రేఁడు

Conjuncts

మ్మ	mm	మ్మ	mn	మ్మ	my	మ్మ	ml	మ్మ	mh
న్మ	mr	న్మ	nn	న్మ	nm	న్మ	ny	న్మ	nl
న్మ	nh	న్మ	nr						

Examples

Input	Output
anna	అన్న
kRRShNa	కృష్ణ
ayOdhya	అయోధ్య

Explicit Halant Example:

Input	Output
In_bAks	ఇన్బాక్స్
rAj_kumAr	రాజ్ కుమార్

Telugu Inscript



Special Rules

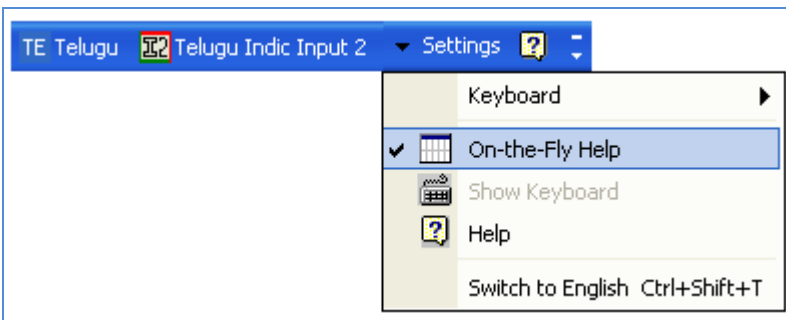
If capital 'M' or capital 'H' or caret '^' appear after conso, vowel or matra map them to 'chandrabindi', 'visarga' or 'anuswar'. Exceptional case: If capital 'M' or capital 'H' come at the start of a word it should be interpreted as small case 'm' and 'h'.	mamtramU -> మంత్రము amthAHpuram -> అంతఃపురం rEMdu -> రేడు
If 'RR' is followed by 'u', it is interpreted as 'RR' for Ra(Rishi).	RRu -> ఋ
If 'm' is followed by a consonant, replace it with anuswar. Exceptional cases: 'my' (ma followed by ya), mm (ma followed by ma) and mm (ma followed by na).	mamtramU -> మంత్రము rEMdu -> రేడు
Character '_' (underscore) can be used to generate explicit half consonants and preventing the formation of conjuncts.	In_baaks ఇన్బాక్స్ raaj_kumaar రాజ్ కుమార్
Words ending with a consonant and "a" will be treated as ending with the full form of the consonant.	chaTTapara చట్టపర
A consonant followed by halant and ZWNJ and consonant, joins them with an explicit halant.	క ్ + [Ctrl-Shift-2] + క = క్క
To type Roman Numerals (Numbers), use the Numpad Keys of the Keyboard with Caps Lock Key ON	1,2,3,...9,0.
To type Lingual Numerals (Numbers), use the Numpad Keys of the Keyboard with Caps Lock Key OFF	౦,౧,౨,౩,౪,౫,౬,౭,౮,౯.

Tool Setting Options

On-the-fly Help

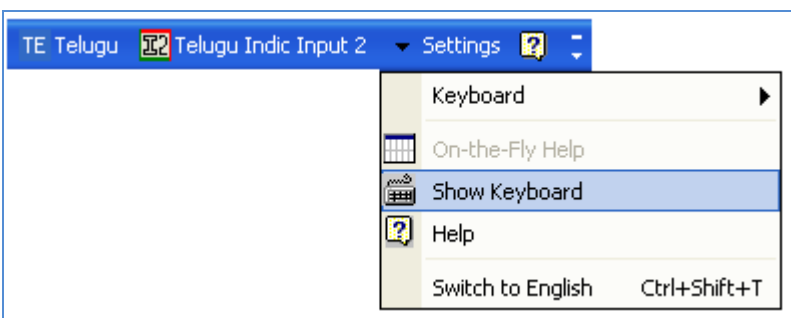
Tool provides the simplest way to type text by using on-the-fly Help. As the user starts typing using transliteration keyboard, he can see the respective letters in selected Indian Language with various matra combinations.

To activate this feature select **On-the-Fly Help** from **Settings** Menu.



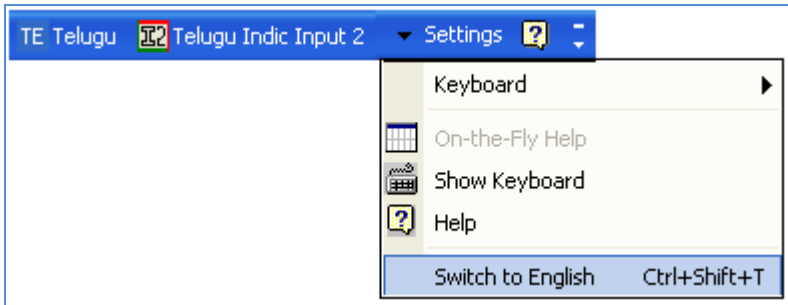
Show Keyboard

To view any keyboard (except Phonetic) select **Show Keyboard** option from **Settings** Menu.

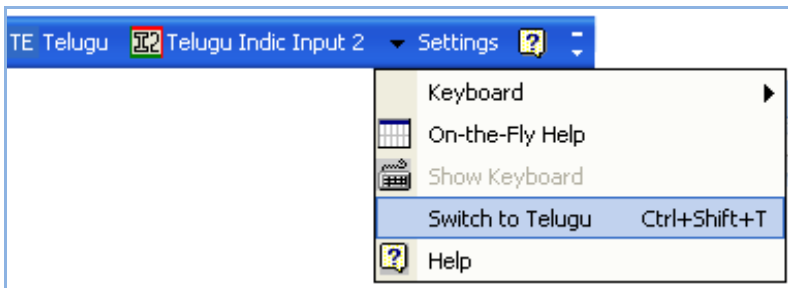


Switch to English/Telugu

To switch to English Language, select **Switch to English** option from **Settings** Menu or use shortcut key Ctrl+Shift+T.

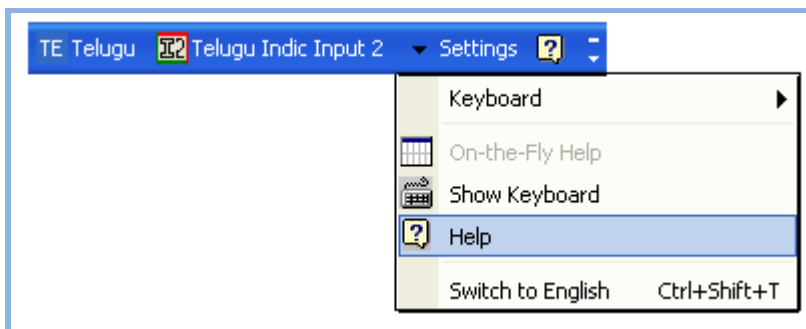


To switch to Telugu Language again, select **Switch to Telugu** option from **Settings** Menu or use shortcut key Ctrl+Shift+T.



Help

To view help on Telugu Indic Input 2 tool, select **Help** from **Settings** Menu.



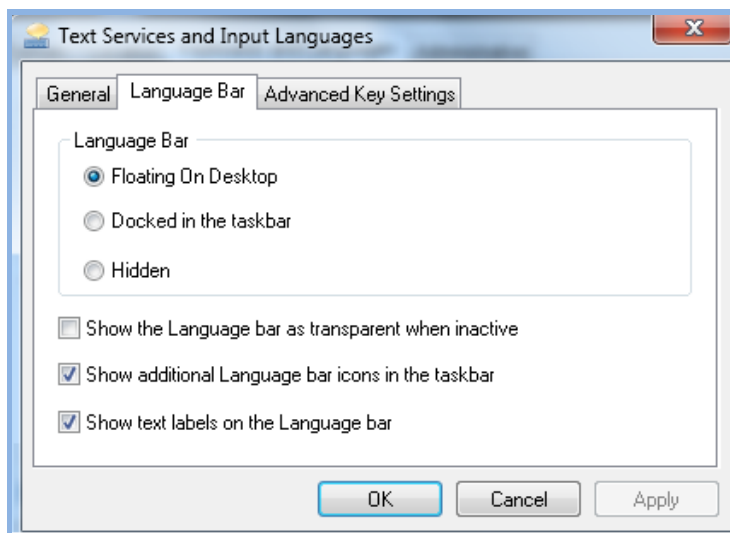
Troubleshooting

1. How can I make Language bar visible on my PC?

Right-click your Desktop taskbar, and point to **Toolbars**. See is **Language bar** selected, if not click on it to select. If Language bar is no longer listed in the toolbar menu try below steps:

VISTA/WINDOWS 7

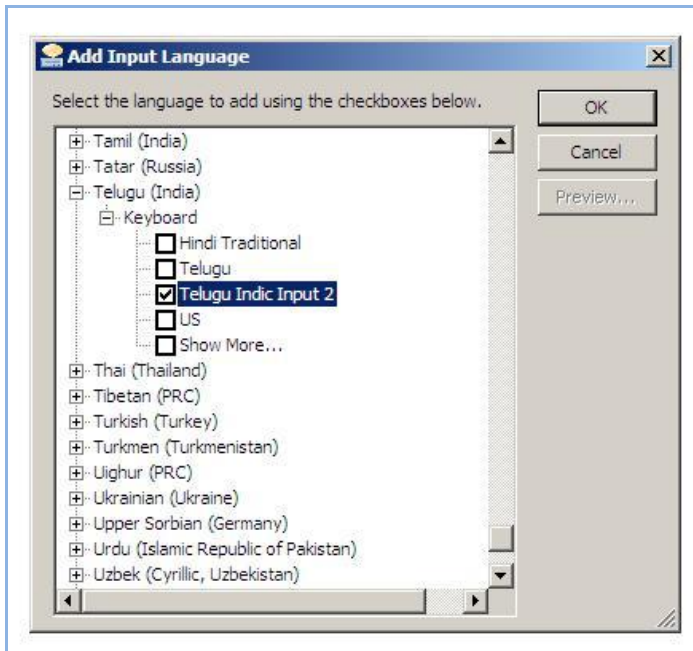
- Go to **Control Panel > Regional and Language Options > Keyboards and Languages (tab) > Change Keyboards > Language Bar**
- Select radio button **Floating on Desktop** or **Docked in the taskbar**.
- Click **OK**.



2. How can I add Telugu Indic Input 2 on my Language bar?

VISTA/WINDOWS 7

- Go to **Control Panel > Regional and Language Options > Keyboards and Languages (tab) > Change Keyboards > General**.
- Click **Add** button, Select the Language (Telugu) and under Keyboard section check the box titled **Telugu Indic Input 2**.
- Click **OK**.



3. I do not want Telugu Indic Input 2 as the default input method for my PC. What can be done?

VISTA/WINDOWS 7

- Go to **Control Panel > Regional and Language Options > Keyboards and Languages (tab) > Change Keyboards > General**

Check both:

- ✓ You have not selected Telugu as your **Default Input Language**.
- ✓ You have not selected Telugu Indic Input 2 as an input method in Language bar.

To Uninstall Telugu Indic Input 2

Follow the steps below to uninstall the tool.

1. Open **Control Panel** → **Add/Remove Programs** to remove the program(s).
2. Select **Telugu Indic Input 2** and click **Remove** button.
3. You will be prompted by a confirmatory message. Select **Yes** to remove the tool completely.

Note: It is recommended to close all running applications before uninstalling the Telugu Indic Input 2 Tool.