

Malayalam Indic Input 2 - User Guide

Contents

WHAT IS MALAYALAM INDIC INPUT 2?	3
SYSTEM REQUIREMENTS.....	3
TO INSTALL MALAYALAM INDIC INPUT 2.....	3
TO USE MALAYALAM INDIC INPUT 2	4
SUPPORTED KEYBOARDS.....	5
MALAYALAM TRANSLITERATION	5
<i>Keyboard Rules</i>	5
MALAYALAM INSCRIPT	7
MALAYALAM TYPEWRITER	8
TOOL SETTING OPTIONS	9
ON-THE-FLY HELP	9
SHOW KEYBOARD	9
SWITCH TO ENGLISH/MALAYALAM	10
HELP	10
TROUBLESHOOTING	11
TO UNINSTALL MALAYALAM INDIC INPUT 2.....	12

What is Malayalam Indic Input 2?

Malayalam Indic Input 2 provides a very convenient way of entering text in Malayalam Language using the English QWERTY keyboard in any editing application (Office Application/WordPad /Notepad) that supports Text Services. Malayalam Indic Input 2 tool will be packaged as a setup and running the setup will invoke the services. The tool supports all popular keyboard layouts.

System Requirements

Windows Vista

Windows 7

*Tool is compatible with equivalent 64-bit Operating Systems mentioned above.

To Install Malayalam Indic Input 2

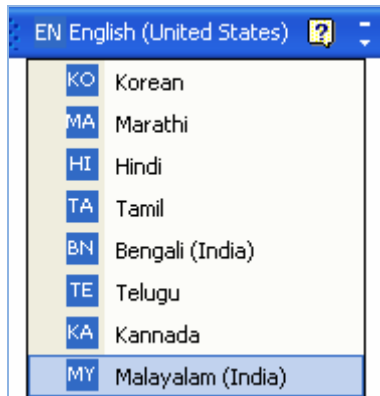
Installation of the Malayalam Indic Input 2 is a very easy process that takes less than two minute to complete.

Run or double click **Malayalam Indic Input 2 Setup**. The setup wizard will guide you through the installation process. Once the installation process is complete, **Malayalam Indic Input 2 has been successfully installed** will be displayed.

Note: On Windows Vista and Windows 7, if your user login does not have administrative privileges or is not included in the user group of administrators right click the "Setup.exe" icon and select "Run as Administrator".

To Use Malayalam Indic Input 2

1. Start any Office application, including WordPad or Notepad.
2. Click the Language Indicator located in the System Tray on the right side of the Windows taskbar or on Language bar as shown below and select **MY-Malayalam (India)**.



3. Select **Malayalam Indic Input 2** from the shortcut menu that appears. The PC is now ready to start typing in Malayalam.

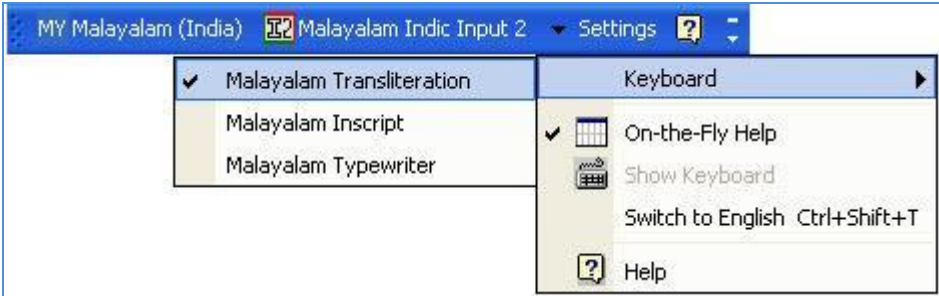


Note:

- If you are unable to view Language bar on your PC [Click Here](#).

Supported Keyboards

Malayalam Indic Input 2 supports various types of Keyboards. Click **Settings** Icon and select **Keyboard**. Choose keyboard layout of your choice form list of available keyboards.



Malayalam Transliteration

User can type his message in Roman using the Standard English keyboard, which is transliterated on-the-fly to Malayalam. It works on the logic of phonetics and is most effective when user write the word the way it is spoken.

Keyboard Rules

Vyanjan (Consonants)									
ക	ka,ca,qa	ഖ	kha	ഗ	ga	ഘ	gha	ങ	nga
ച	cha	ഛ	chha	ജ	ja	ഝ	jha	ഞ	nja
ട	Ta	ഠ	Tha	ഡ	Da	ഢ	Dha	ണ	Na
ത	tha	ഥ	ttha	ദ	da	ഢ	dha	ന	na
പ	pa	ഫ	pha	ബ	ba	ഭ	bha	മ	ma
യ	ya	ര	ra	റ	Ra	ല	la	ള	La
വ	va,wa	ശ	Sa	ഷ	Sha,sha	സ	sa	ഹ	ha
ക്ഷ	ksha,kSha,Xa	ഴ	zha						

Swaraksharam (Vowels)											
അ	a	ആ	aa	ഇ	i	ഈ	ee,ii,I	ഉ	u	ഊ	oo,uu,U
ഋ	r^	എ	e	ഏ	E	ഐ	ai,ei	ഒ	o	ഔ	O
ഘ	au,ou										

Example:	
Input	Output
aparaahnam	അപരാഹ്നം
mammootti	മമ്മൂട്ടി

Matras											
ാ	aa	ി	i	ീ	ee,ii,I	ു	u	ൂ	oo,uu,U	്യ	r^
െ	e	േ	E	ൈ	ai,ei	ൊ	o	ോ	O	ൗ	au,ou

Example:	
Input	Output
draupathi	ദ്രൗപതി
kOlaahalam	കോലാഹലം

Anuswara, Visarga			
ം	M,m	ഃ	H

Example:	
Input	Output
dhuHkham	ദുഃഖം
punaHsamghaTana	പുനഃസംഘടന

Chillaksharas: The words n, r, N, L will form chillakshara if underscore is typed after it.									
ൻ	n_	ൺ	N_	ൾ	L_	ൽ	l_	ർ	r_

Example:	
Input	Output
chin_maya	ചിൻമയ
churuL	ചുരുൾ

Conjuncts (Koottaksharam)											
റ്റ	ta	ക്ഷ	ksha,Xa	ക	nka	ട	tta	ഗ്ഗ	Ga,gga	ജ	Ja
ൺട	nTa	ക	kka	ന്റ	nta	ത	nha	ന്ത	ntha		

Example:	
Input	Output
kizhakk	കിഴക്ക്
illikkaaT	ഇല്ലിക്കാട്

Explicit Halant:	
Input	Output
bhaarath	ഭാരത്
melukaav	മേലുകാവ്

Special Rules	
If capital 'H' appear after conso, vowel or matra map them to ' visarga '. Exceptional case: If capital 'H' come at the start of a word it should be interpreted as 'h'.	Heera (ഹീര) adhaHkr^tha (അധഃകൃത)
If 'm' appears after vowel or matra than it is interpreted as 'anuswara' else it is interpreted as 'm' conso. If 'm' appear after vowel or matra and before 'm', 'r', 'y', 'l', 'p' than it is interpreted as 'm' conso	adhOIokam(അധോലോകം) appiyamma (അപ്പിയമ്മ)
Character '~' rule facilitates occurrence of explicit half consonants and prevents the formation of conjuncts	
Character '_' (underscore) can be used to generate explicit halant and preventing the formation of conjuncts.	
If previous char is 'r', 'l', 'L', 'N' and current char is 'h' than ha conso is append on output string and halant is not appended on output string.	pharh (ഫർഹ)
1) If 'r', 'n', 'N' is pressed than chilla 'r', chilla 'n' and chilla 'N' is displayed 2) If previous char is not consonant and 'l' and 'L' is pressed than chilla la and chilla La is created. 3) If previous char is consonant and 'l' and 'L' is pressed than la conso is displayed.	r, n, N, l, L (ര, ന, ണ, ള, ഉ) aaRaamklaas or aaRaamkLaas(ആറാംക്ലാസ്)
Chillakshar 'r', 'l' and 'L' is converted to consonant 'r','l' and 'L' when the next consonant is 'v' and 'y'.	uNarvaaN (ഉണവാണ്)
Chillakshar 'n' and 'N' is always converted to consonant 'n' and 'N' when the next charecter is consonant.	janma (ജന്മ)
To type Roman Numerals (Numbers), use the Numpad Keys of the Keyboard with Caps Lock Key ON.	1, 2, 3,...9, 0.
To type Lingual Numerals (Numbers), use the Numpad Keys of the Keyboard with Caps Lock Key OFF.	൧, ൨, ൩, ൪, ൫, ൬, ൭, ൮, ൯

Malayalam Inscript



Special Rules		
consoA+halant(d) + consoB = conjunct	k+d+< = ട + ് + ള = ള	ക + ് + ഷ = ക്ഷ
Chillakrsaras can be formed using conso + halant + CtrlShift 1	ട + ് + CtrlShift 1 + ള = ളr	ര + ് + (ctrl+shift+1) = ര് ന + ് + (ctrl+shift+1) = ന് ണ + ് + (ctrl+shift+1) = ണ് ല + ് + (ctrl+shift+1) = ല് ള + ് + (ctrl+shift+1) = ള്
consoA+halant(d) + Ctrl+Shift+2 + consoB = disjoint conjunct	ട + െ + CtrlShift 2 + ള = ള്	ക + െ + CtrlShift 2 + ഷ = ക്ഷ്
To type Roman Numerals (Numbers), use the Numpad Keys of the Keyboard with Caps Lock Key ON.	1, 2, 3,....9,0.	1, 2, 3,....9,0.
To type Lingual Numerals (Numbers), use the Numpad Keys of the Keyboard with Caps Lock Key OFF.	൦,൧,൨,൩,൪,൫,൬,൭,൮,൯	൦, ൧, ൨, ൩, ൪, ൫, ൬, ൭, ൮, ൯

Malayalam Typewriter



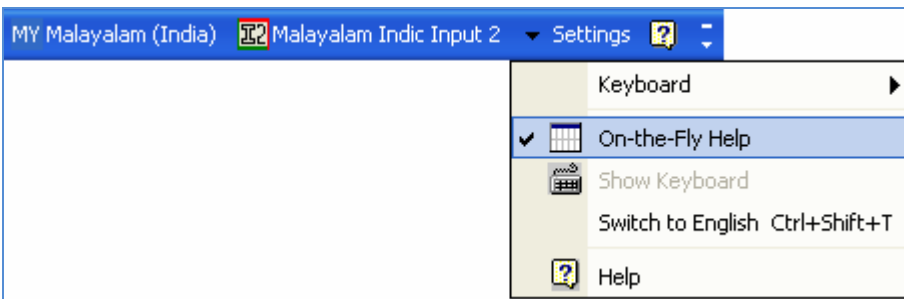
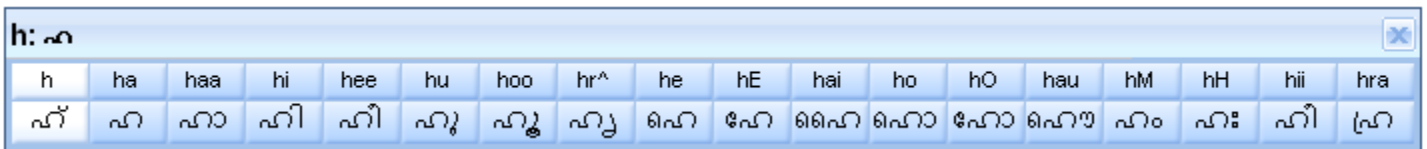
Special Rules	
To type Roman Numerals (Numbers), use the Numpad Keys of the Keyboard with Caps Lock Key ON.	1, 2, 3,....9, 0.
To type Lingual Numerals (Numbers), use the Numpad Keys of the Keyboard with Caps Lock Key OFF.	൦, ൧, ൨, ൩, ൪, ൫, ൬, ൭, ൮, ൯

Tool Setting Options

On-the-fly Help

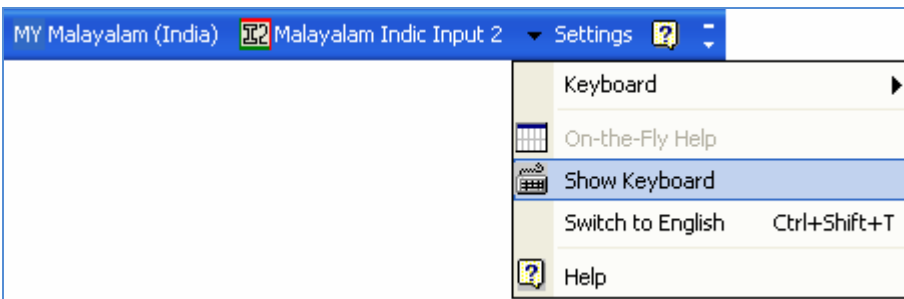
Tool provides the simplest way to type text by using on-the-fly Help. As the user starts typing using transliteration keyboard, he can see the respective letters in selected Indian Language with various matra combinations.

To activate this feature select **On-the-Fly Help** from **Settings** Menu.



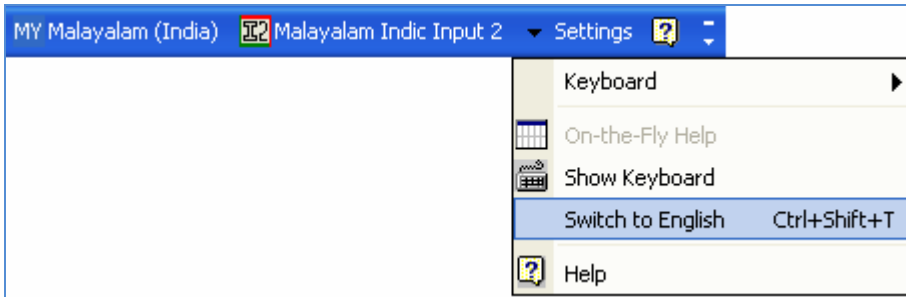
Show Keyboard

To view any keyboard (except Phonetic) select **Show Keyboard** option from **Settings** Menu

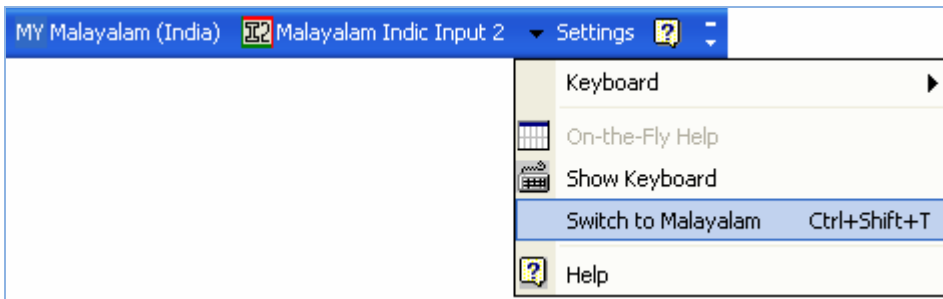


Switch to English/Malayalam

To switch to English Language, select **Switch to English** option from **Settings** Menu or use shortcut key Ctrl+Shift+T.

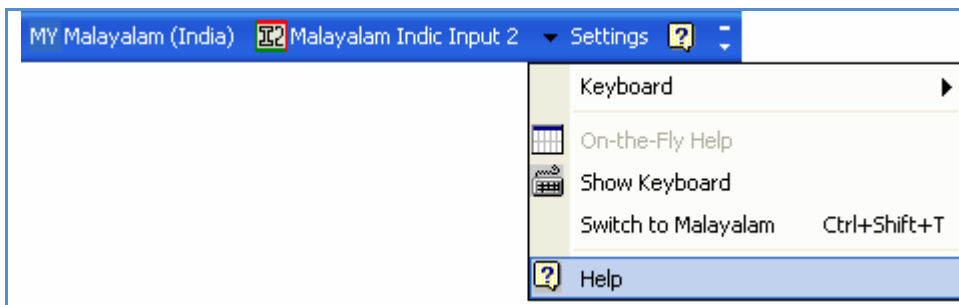


To switch to Malayalam Language again, select **Switch to Malayalam** option from **Settings** Menu or use shortcut key Ctrl+Shift+T.



Help

To view help on Malayalam Indic Input 2 tool, select **Help** from **Settings** Menu.



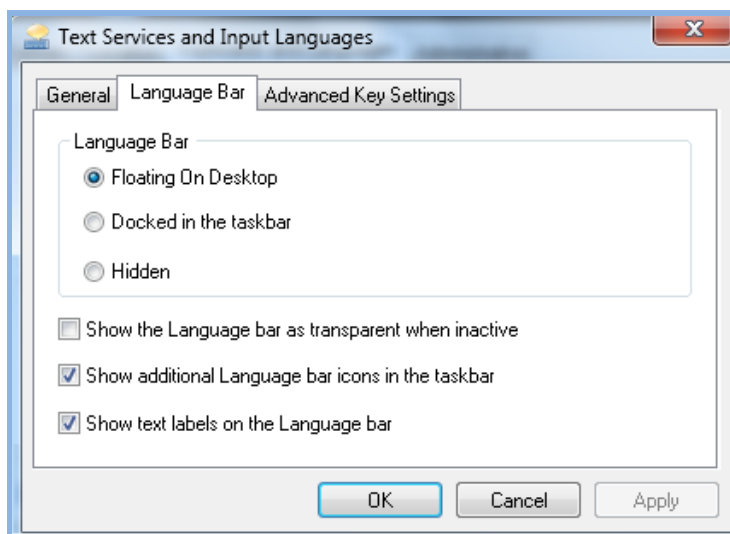
Troubleshooting

1. How can I make Language bar visible on my PC?

Right-click your Desktop taskbar, and point to **Toolbars**. See is **Language bar** selected, if not click on it to select. If Language bar is no longer listed in the toolbar menu try below steps:

VISTA/WINDOWS 7

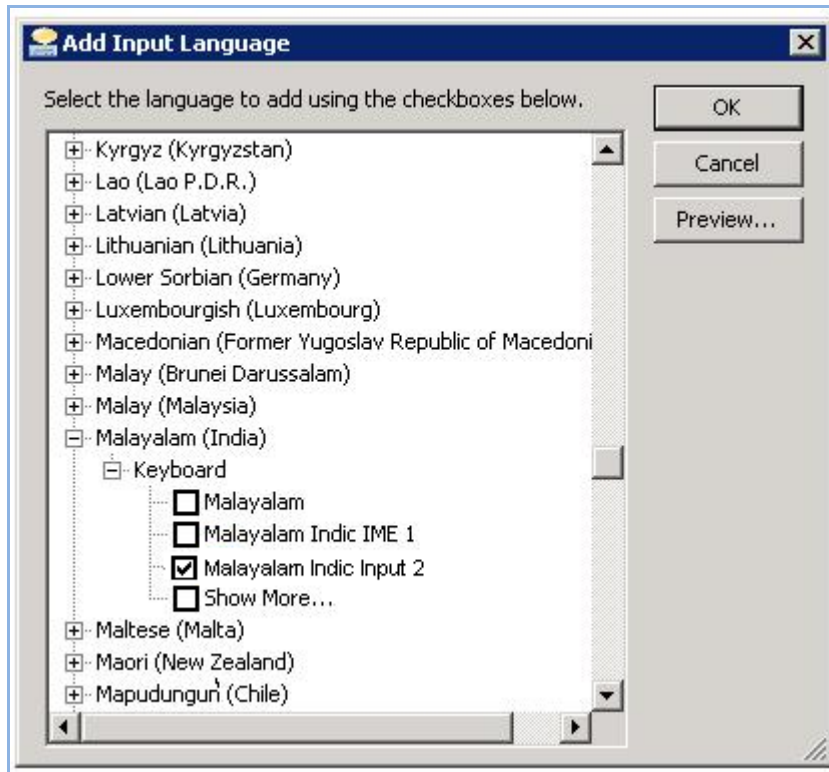
- Go to **Control Panel > Regional and Language Options > Keyboards and Languages (tab) > Change Keyboards > Language Bar**
- Select radio button **Floating on Desktop** or **Docked in the taskbar**.
- Click **OK**.



2. How can I add Malayalam Indic Input 2 on my Language bar?

VISTA/WINDOWS 7

- Go to **Control Panel > Regional and Language Options > Keyboards and Languages (tab) > Change Keyboards > General**.
- Click **Add** button, Select the Language (Malayalam) and under Keyboard section check the box titled **Malayalam Indic Input 2**.
- Click **OK**.



3. I do not want Malayalam Indic Input 2 as the default input method for my PC. What can be done?

VISTA/WINDOWS 7

- Go to **Control Panel > Regional and Language Options > Keyboards and Languages (tab) > Change Keyboards > General**

Check both:

- ✓ You have not selected Malayalam as your **Default Input Language**.
- ✓ You have not selected Malayalam Indic Input 2 as an input method in Language bar.

To Uninstall Malayalam Indic Input 2

Follow the steps below to uninstall the tool.

1. Open Windows **Control Panel** → **Add/Remove Programs** to remove the program(s).
2. Select **Malayalam Indic Input 2** and click **Remove** button.
3. You will be prompted by a confirmatory message. Select **Yes** to remove the tool completely.

Note: It is recommended to close all running applications before uninstalling the Malayalam Indic Input 2 Tool.