

# Kannada Indic Input 2 - User Guide

---

## Contents

<b>WHAT IS KANNADA INDIC INPUT 2? .....</b>	<b>3</b>
SYSTEM REQUIREMENTS.....	3
<b>TO INSTALL KANNADA INDIC INPUT 2 .....</b>	<b>3</b>
<b>TO USE KANNADA INDIC INPUT 2 .....</b>	<b>4</b>
<b>SUPPORTED KEYBOARDS.....</b>	<b>5</b>
KANNADA TRANSLITERATION .....	5
<i>Keyboard Rules</i> .....	5
KANNADA INSCRIPT .....	7
KANNADA TYPEWRITER .....	8
KGP KEYBOARD .....	9
<b>TOOL SETTING OPTIONS .....</b>	<b>23</b>
ON-THE-FLY HELP.....	23
SHOW KEYBOARD .....	23
SWITCH TO ENGLISH/KANNADA .....	24
HELP .....	24
<b>TROUBLESHOOTING .....</b>	<b>25</b>
<b>TO UNINSTALL KANNADA INDIC INPUT 2.....</b>	<b>26</b>

## What is Kannada Indic Input 2?

Kannada Indic Input 2 provides a very convenient way of entering text in Kannada Language using the English QWERTY keyboard in any editing application (Office Application/WordPad /Notepad) that supports Text Services. Kannada Indic Input 2 tool will be packaged as a setup and running the setup will invoke the services. The tool supports all popular keyboard layouts.

## System Requirements

Windows Vista

Windows 7

\*Tool is compatible with equivalent 64-bit Operating Systems mentioned above.

## To Install Kannada Indic Input 2

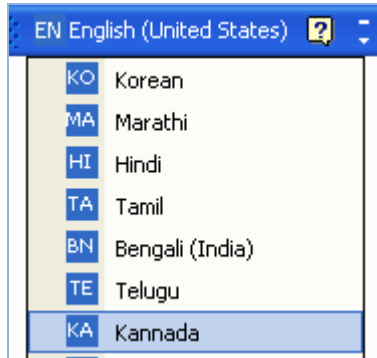
Installation of the Kannada Indic Input 2 is a very easy process that takes less than two minute to complete.

Run or double click **Kannada Indic Input 2 Setup**. The setup wizard will guide you through the installation process. Once the installation process is complete, **Kannada Indic Input 2 has been successfully installed** will be displayed.

**Note:** On Windows Vista and Windows 7, if your user login does not have administrative privileges or is not included in the user group of administrators right click the "Setup.exe" icon and select "Run as Administrator".

## To Use Kannada Indic Input 2

1. Start any Office application, including WordPad or Notepad.
2. Click the Language Indicator located in the System Tray on the right side of the Windows taskbar or on Language bar as shown below and select **KA-Kannada**.



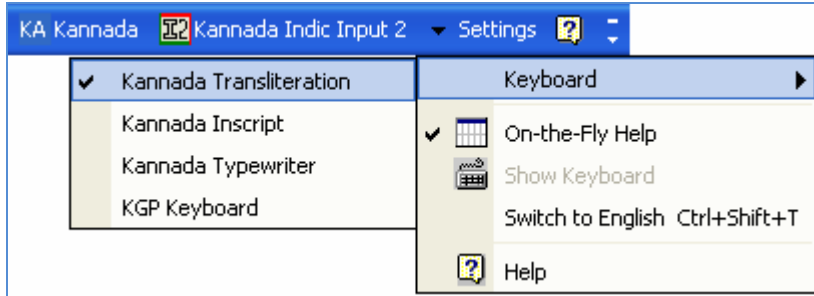
3. Select **Kannada Indic Input 2** from the shortcut menu that appears. The PC is now ready to start typing in Kannada.



**Note:** If you are unable to view Language bar on your PC [Click Here](#).

## Supported Keyboards

Kannada Indic Input 2 supports various types of Keyboards. Click **Settings** Icon and select **Keyboard**. Choose keyboard layout of your choice form list of available keyboards.



## Kannada Transliteration

User can type his message in Roman using the Standard English keyboard, which is transliterated on-the-fly to Kannada. It works on the logic of phonetics and is most effective when user write the word the way it is spoken.

### Keyboard Rules

Vyanjan (Consonants)									
ಕ	ka,qa	ಖ	Ka,kha	ಗ	ga	ಘ	Ga	ಙ	~ga
ಚ	ca,cha	ಛ	Ca	ಜ	ja	ಝ	ja,jha	ಞ	~ja
ಟ	Ta	ಠ	Tha	ಡ	Da	ಢ	Dha	ಣ	Na
ತ	ta	ಥ	tha	ದ	da	ಧ	dha	ನ	na
ಪ	pa,fa,pha	ಫ	Pa	ಬ	ba	ಭ	Ba,bha	ಮ	ma
ಯ	ya	ರ	ra	ಲ	la	ವ	va,wa	ಳ	La
ಶ	Sa	ಷ	Sha	ಹ	ha	ಷ	kSha,Xa	ಱ	Lxa

Swar (Vowels)									
ಅ	a	ಆ	aa,A	ಇ	i	ಈ	ee,l,ii	ಉ	u
ಊ	oo,U,uu	ಋ	Ru	ೠ	RU	ಎ	e	ಏ	E
ಐ	ai,ei	ಒ	o	ಓ	O	ಔ	au,ou		

### Example:

Input	Output
gaNapati	ಗಣಪತಿ
eNike	ಎಣಿಕೆ

Matras									
ಾ	aa	ಿ	i	ೀ	ee,ii,I	ು	u	ೂ	oo,uu,U
ೈ	Ru	ೆ	e	ೇ	E	ೈ	ai	ೋ	o
ೋ	O	ೌ	au						

**Example:**

Input	Output
gRuha	ಗೃಹ
paise	ಪೈಸೆ

**Anuswara, Visarga**

ಂ	M	ಃ	H
---	---	---	---

**Example:**

Input	Output
aMtya	ಅಂತ್ಯ
punaH	ಪುನಃ

**Conjuncts (Rakar and Raph) Example:**

Input	Output
chakra	ಚಕ್ರ
bharjari	ಭರ್ಜರಿ

**Explicit Halant Example:**

Input	Output
TAk^^TaiM	ಟಾಕ್‌ಟೈಂ
rAj^^kumAr	ರಾಜ್‌ಕುಮಾರ್

**Ru/RU Rule:**

ಋ	Ru	ೠ	RU
---	----	---	----

**Example:**

Input	Output
kRupe	ಕೃಪೆ
sareesRupa	ಸರೀಸೃಪ

**Examples of half ha when h is typed after S, T, D , p, g, t, d, b, k**

Input	Output
kaS~heerA	ಕಶ್ಚೀರಾ
saT~hOli	ಸಟೋಲಿ

**Special Combinations**

If capital 'M' or capital 'H' appear after conso, vowel or matra map them to 'anuswar' or ' visarga ' resp. Exceptional case: If capital 'M' or capital 'H' come at the start of a word it should be interpreted as small case 'm' and 'h'.	
If 'Ru' is followed by any vowel, ignore matra as 'Ru' stands for Ra Rishi.	RuShi (ಋಷಿ)
If 'RU' is followed by any vowel, ignore matra as 'RU' stands for Kannada vocalic RR.	
If 'n' is followed by a consonant, replace it with anuswar. Exceptional cases: 'ny' ("n" followed by y), nm ("n" followed by "m") and nn (na followed by na).	
Character '^' rule facilitates occurrence of explicit half consonants and prevents the formation of conjuncts	
Character '^' (underscore) can be used to generate explicit halant and preventing the formation of conjuncts.	
When ~h appears after S, T, D, p, g, t, d, b, k, they should not change to Sh, Th, Dh, ph, gh, th, dh, bh, kh and half ha should be appended	kaS~heerA (ಕಶ್ಚೀರಾ)
To type Roman Numerals (Numbers), use the Numpad Keys of the Keyboard with Caps Lock Key ON.	1,2,3,....9,0.
To type Lingual Numerals (Numbers), use the Numpad Keys of the Keyboard with Caps Lock Key OFF.	೦,೧,೨,೩,೪,೫, ೬,೭,೮,೯

**Kannada Inscript**



Special Rules		
consoA + halant(d) + consoB = conjunct	k + d+< = ಕ + ಧ = ಕ್ಧ	ಕ + ಾ + ಕ = ಕ್ಕ
consoA + halant(d) + Ctrl+Shift+1 + consoB = disjoint conjunct	ಕ + ಧ + CtrlShift 1 + ಳ = ಕ್ಕಳ	ಕ + ಾ + CtrlShift 1 + ಕ = ಕ್ಕಕ
consoA + halant(d) + Ctrl+Shift+2 + consoB = disjoint conjunct	ಕ + ಾ + CtrlShift 2 + ಳ = ಕ್ಕಳ	ಕ + ಾ + CtrlShift 2 + ಕ = ಕ್ಕಕ
To type Roman Numerals (Numbers), use the Numpad Keys of the Keyboard with Caps Lock Key ON.	1, 2, 3,...9, 0	1, 2, 3,...9, 0
To type Lingual Numerals (Numbers), use the Numpad Keys of the Keyboard with Caps Lock Key OFF.	೦,೧,೨,೩,೪,೫,೬,೭,೮,೯	೦,೧,೨,೩,೪,೫,೬,೭,೮,೯

### Kannada Typewriter



Special Rules	
To type Roman Numerals (Numbers), use the Numpad Keys of the Keyboard with Caps Lock Key ON.	1, 2, 3,...9, 0.
To type Lingual Numerals (Numbers), use the Numpad Keys of the Keyboard with Caps Lock Key OFF.	೦,೧,೨,೩,೪,೫,೬,೭,೮,೯
Reph is typed after a consonant or conjunct.	<p>ಕ + reph = ಕ್ಕ</p> <p>ಕೆ + reph = ಕ್ಕೆ</p> <p>ಕೈ + reph = ಕ್ಕೈ</p> <p>ಕೈ + reph = ಕ್ಕೈ</p>
I matra (಼) followed by ಳ will generate ಼ೆ matra.	ಕಿ + ಳ = ಕಿ಼ೆ
ಉ' vowel followed by '಼' matra creates 'ಉ' vowel.	ಉ + ಼ = ಉ಼
ಒ' vowel followed by '಼' matra creates 'ಒ' vowel.	ಒ + ಼ = ಒ಼
ಏ' vowel followed by '಼' matra creates 'ಏ' vowel.	ಏ + ಼ = ಏ಼



## KGP Keyboard



Special Rules	
To type Roman Numerals (Numbers), use the Numpad Keys of the Keyboard with Caps Lock Key ON.	1, 2, 3....9, 0.
To type Lingual Numerals (Numbers), use the Numpad Keys of the Keyboard with Caps Lock Key OFF.	೦,೧,೨,೩,೪,೫,೬,೭,೮,೯
Ra conso behaves as a Reph when typed after a consonant or conjunct.	ಕ + ರ = ಕರ್ ಕ್ಯ + ರ = ಕ್ಯರ್ ಕು + ರ = ಕುರ್ ಕ್ಕು + ರ = ಕ್ಕುರ್
2 consecutive 'halants' between the consonants can be used to prevent the formation of a conjunct.	ಕ + ೆ + ತ = ಕ್ತ ಕ + ೆ + ೆ + ತ = ಕ್ತತ
್ಯ followed by R + X will generate ್ಯ್.	ಕ್ಯ + R + X = ಕ್ಯ್
R followed by X will generate vowel 'ಋ'.	R + X = ಋ
Consonant ಁ can be obtained as ರ followed by X.	ರ + X = ಁ
Consonant ಳ can be obtained as ಳ followed by X.	ಳ + X = ಳ

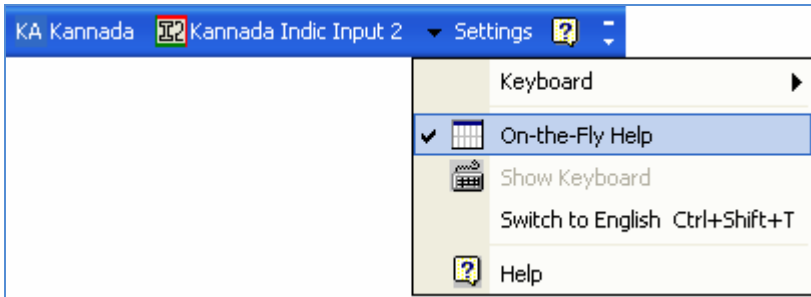
## Tool Setting Options

### On-the-fly Help

Tool provides the simplest way to type text by using on-the-fly Help. As the user starts typing using transliteration keyboard, he can see the respective letters in selected Indian Language with various matra combinations.

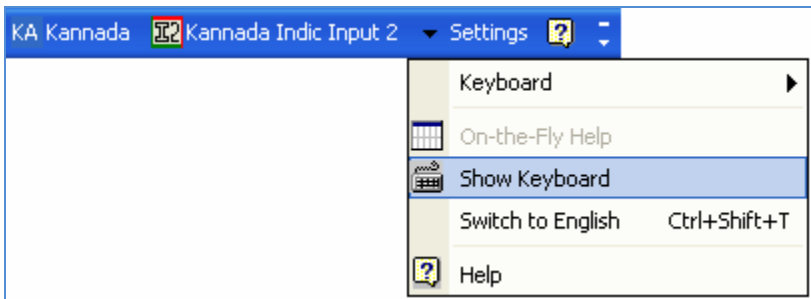
To activate this feature select **On-the-Fly Help** from **Settings** Menu.

c: ಷ	C: ಛ	ch: ಷ	Ch: ಛ														
c	ca	caa	ci	cee	cu	coo	cRu	ce	cE	cai	co	cO	cau	cM	cH	cRU	cra
ಷ	ಶ	ಶಾ	ಶಿ	ಶೀ	ಶು	ಶೂ	ಶ್ಯ	ಶೆ	ಶೇ	ಶೈ	ಶೊ	ಶೋ	ಶೌ	ಶಂ	ಶಃ	ಶ್ಚ	ಶ್ರ



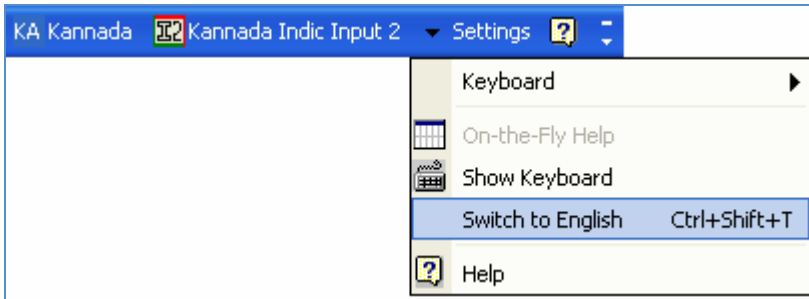
### Show Keyboard

To view any keyboard (except Phonetic) select **Show Keyboard** option from **Settings** Menu

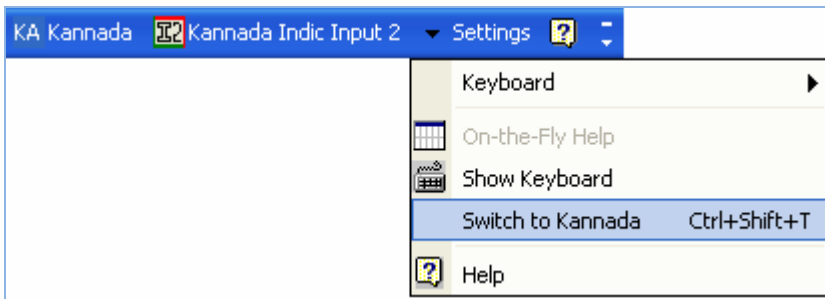


## Switch to English/Kannada

To switch to English Language, select **Switch to English** option from **Settings** Menu or use shortcut key Ctrl+Shift+T.

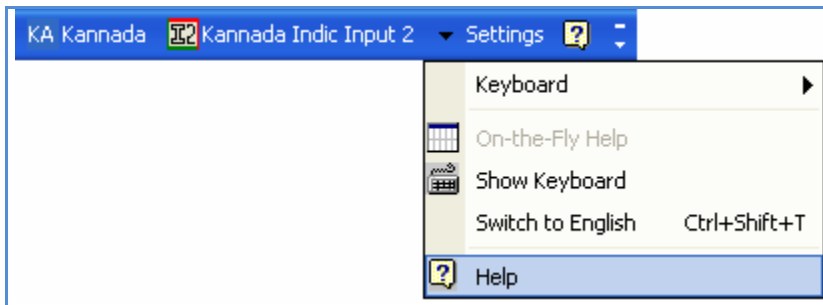


To switch to Kannada Language again, select **Switch to Kannada** option from **Settings** Menu or use shortcut key Ctrl+Shift+T.



## Help

To view help on Kannada Indic Input 2 tool, select **Help** from **Settings** Menu.



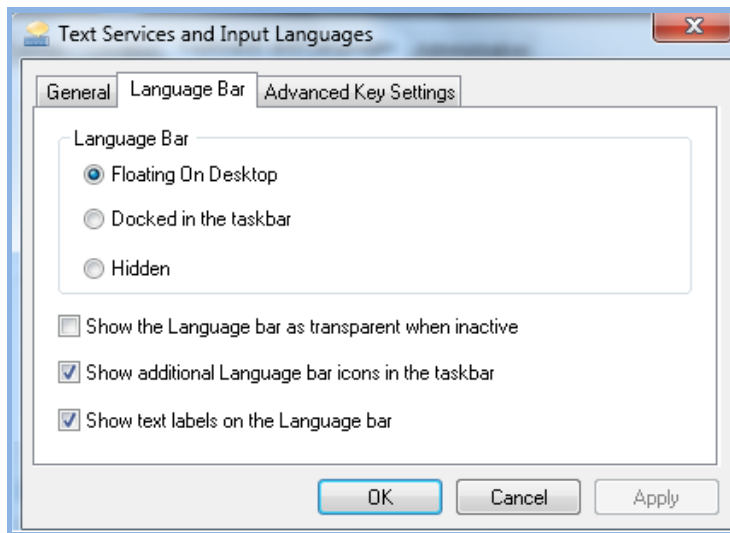
## Troubleshooting

### 1. How can I make Language bar visible on my PC?

Right-click your Desktop taskbar, and point to **Toolbars**. See is **Language bar** selected, if not click on it to select. If Language bar is no longer listed in the toolbar menu try below steps:

#### VISTA/WINDOWS 7

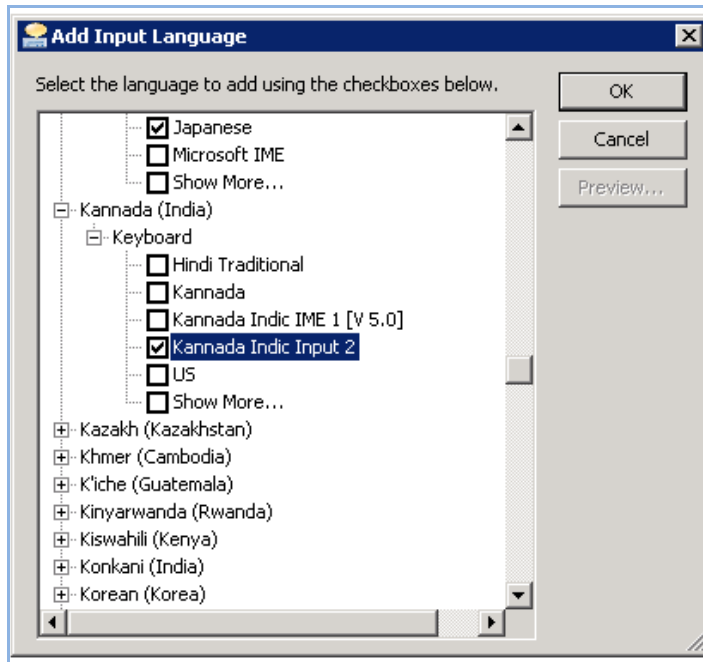
- Go to **Control Panel > Regional and Language Options > Keyboards and Languages (tab) > Change Keyboards > Language Bar**
- Select radio button **Floating on Desktop** or **Docked in the taskbar**.
- Click **OK**.



### 2. How can I add Kannada Indic Input 2 on my Language bar?

#### VISTA/WINDOWS 7

- Go to **Control Panel > Regional and Language Options > Keyboards and Languages (tab) > Change Keyboards > General**.
- Click **Add** button, Select the Language (Kannada) and under Keyboard section check the box titled **Kannada Indic Input 2**.
- Click **OK**.



### 3. I do not want Kannada Indic Input 2 as the default input method for my PC. What can be done?

#### VISTA/WINDOWS 7

- Go to **Control Panel > Regional and Language Options > Keyboards and Languages (tab) > Change Keyboards > General**

Check both:

- ✓ You have not selected Kannada as your **Default Input Language**.
- ✓ You have not selected Kannada Indic Input 2 as an input method in Language bar.

## To Uninstall Kannada Indic Input 2

Follow the steps below to uninstall the tool.

1. Open Windows **Control Panel** → → **Add/Remove Programs** to remove the program(s).
2. Select **Kannada Indic Input 2** and click **Remove** button.
3. You will be prompted by a confirmatory message. Select **Yes** to remove the tool completely.

**Note:** It is recommended to close all running applications before uninstalling the Kannada Indic Input 2 Tool.